

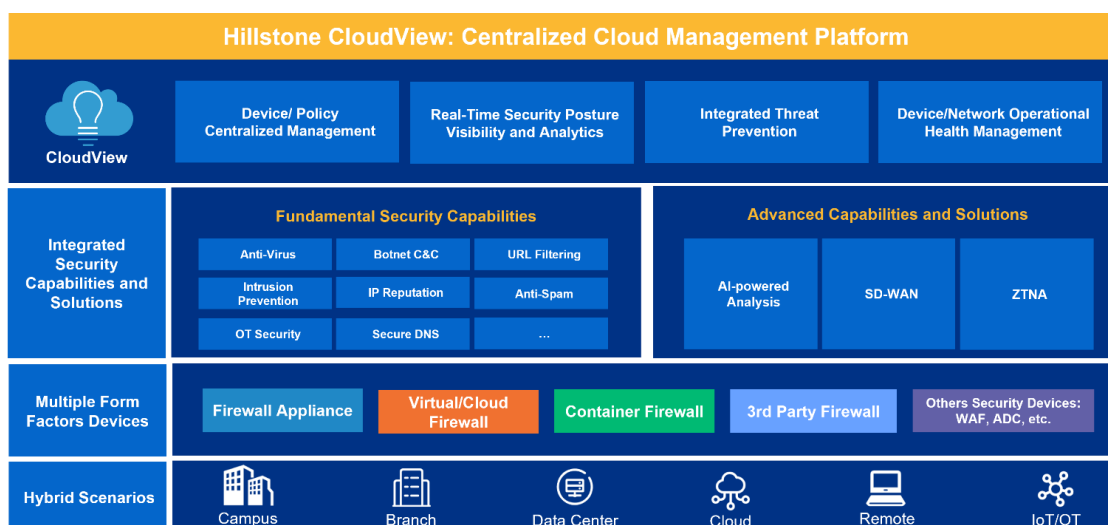
Hillstone CloudView

A Centralized Cloud Management Platform to Secure Hybrid Enterprises

Today's enterprises face unprecedented cybersecurity challenges amid shifts to hybrid cloud and edge computing, where sophisticated threats exploit fragmented visibility across borderless boundaries. Traditional security architectures, burdened by disjointed point products, create operational friction and dangerous security gaps. This siloed approach forces organizations into a reactive posture, where the lack of a global perspective leads to delayed incident response and costly business disruptions. To secure the modern hybrid enterprise, organizations must move beyond passive defense toward a unified, proactive management strategy that eliminates operational complexity.

Product Introduction

Hillstone CloudView serves as the centralized orchestration hub for hybrid environment, delivering a one-stop SecOps experience through a simplified "register-and-use" model. It provides centralized management and consolidated control across all firewall form factors and other security products such as WAF, ADC, etc. CloudView enables unified policy management through a single pane of glass to synchronize consistent security across hybrid environment. Additionally, its native CI/CD integration automates security provisioning, embedding protection directly into DevOps pipelines. By integrating real-time security posture monitoring, risk asset management, threat prevention and proactive health analytics, it transforms fragmented environments into a cohesive, automated security fabric, ensuring streamlined operations and unprecedented visibility across the entire hybrid environment and digital assets.



Key Benefits



Effortless SaaS Delivery:

As a SaaS-native platform, Hillstone CloudView eliminates complex on-site deployment and maintenance. Organizations achieve instant-on security and operation via simple web-based registration, ensuring rapid time-to-value and significantly reduced operational overhead for IT teams.



Robust Operation Efficiency:

Hillstone CloudView integrates rich functions such as device management, asset and threat discovery, risk remediation, in-depth report and more into a unified platform, significantly streamlining Network Operations Center (NOC) and Security Operations Center (SOC) workflows.

Product Highlights

SaaS-based Cloud Manager

As a SaaS service hosted on a public cloud infrastructure, Hillstone CloudView enables customers to access the service from the web from anywhere at any time from any devices. This empowers the customer to monitor network and devices without any physical limitation, delivering optimal experience along with optimized security management and operational efficiency in distributed environments.

Centralized Device Management

Hillstone CloudView delivers consolidated control over all firewall form factors—hardware, virtual, cloud, and containerized deployments. By providing a "single pane of glass," CloudView empowers organizations to manage diverse security assets as a cohesive fabric, significantly reducing operational complexity and ensuring total visibility across the entire digital estate.

Monitor

Group

Position

All

Uncategorized

vFW

ZPC

test

NGFW

BDS

WAF

Device List

Export Device Information

All

Device Name

Please enter Device

Name/Status	Type	SN	Export IP/Home Address	Manage IP	CPU	Memory	Traffic	Operation
<div><div>vFW08</div><div>Alarms: 4</div></div>	CloudEdge	001002...	111... C	10.89.9...	1.2%	26.16%	216 bps	Access
<div><div>Hillstone-Shen7</div><div>Alarms: 99+</div></div>	NGFW	632491	14.1 C	172.16	1%	40.31%	2.88 Mb	Access
<div><div>SG-6000-ISC6...</div><div>Alarms: 1</div></div>	ISOURCE	462374...	116... C	10.180...	0%	94.34%	-	Access
<div><div>SG-6000</div><div>Alarms: 4</div></div>	CloudEdge	001002...	222... C	10.185...	2.6%	36.48%	-	Access
<div><div>SG-6000</div><div>Alarms: 7</div></div>	CloudEdge	001000...	222... C	10.185...	3%	33.14%	-	Access
<div><div>SG-6000</div><div>Alarms: 5</div></div>	NGFW	593291...	116... C	10.180...	9.8%	42.01%	-	Access
<div><div>HS-DRA2000 DS</div><div>Alarms: 7</div></div>	Other	464250...	222... C	10.182...	0%	63.78%	-	Access
<div><div>SG-6000</div><div>Alarms: 7</div></div>	NGFW	582341...	222... C	10.182...	0.8%	31.34%	-	Access

Total Number 121

20 per page

1 2 3 4 5 6 7

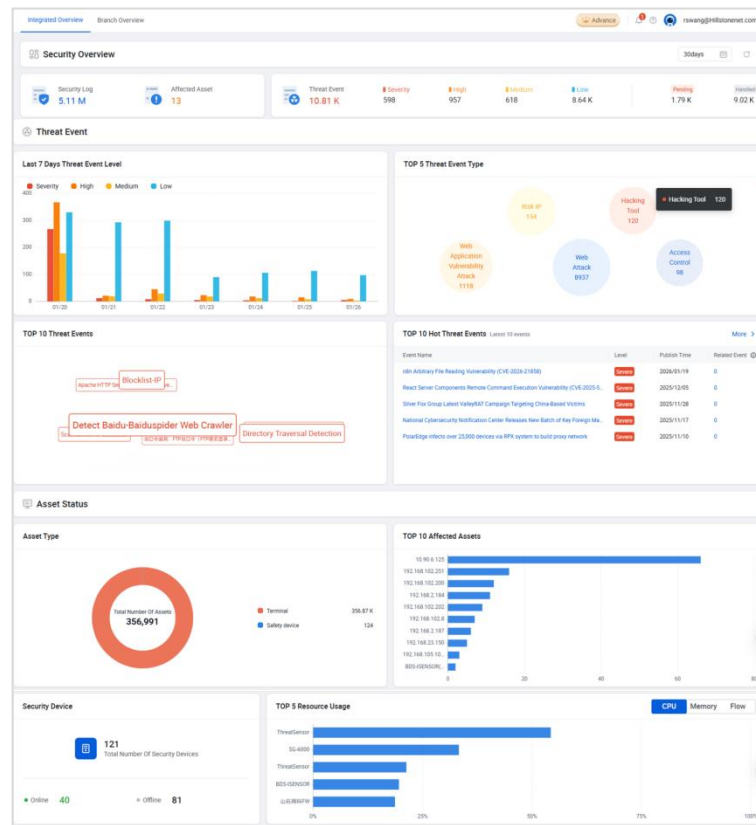
Unified Policy Management and Orchestration

Hillstone CloudView orchestrates a unified security posture by extending unified policy control across Hillstone's native firewalls, and policy configuration for third-party cloud firewall such as AWS. This normalizes security rules across multi-vendor

environments, ensuring consistent enforcement and closing visibility gaps throughout the complex fabric.

Security Posture Monitoring

Hillstone CloudView delivers a holistic view of organizations security posture, visualizing real-time metrics on top threats and incidents vectors, compromised assets, network and device status, resource utilization, etc. With the granular data, CloudView proactively identifies risks and anomalies in the hybrid environment, ensuring a resilient, consistent security posture for distributed environment.



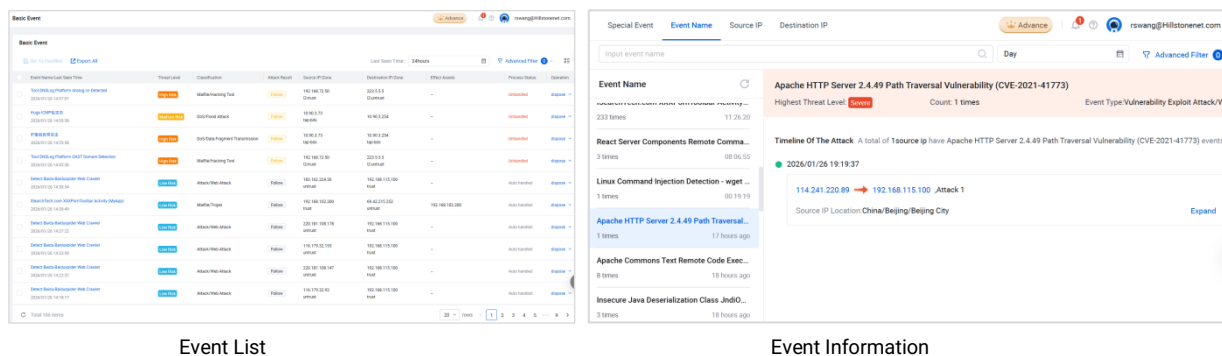
Risk Asset Management

CloudView empowers proactive defense through dynamic risk assessment, continuously evaluating asset status to instantly identify compromised endpoints. By transforming threat data into actionable mitigation strategies, it allows the distributed organizations to surgically isolate risks.

Group	Location	Asset Name	IP Address	Type	Group	Location	Worth	Tags	First Seen Time	Operation
Uncategorized		SG-6000(0010089080786131)	192.168.1.29	security device	vFW	-	Normal	-	2025/03/03 15:09:37	Edit Delete
vFW		10.185.11.45	10.185.11.45	security device	vFW	-	Normal	-	2024/09/04 20:27:30	Edit Delete
ZPC		SG-6000-Tim	192.168.11.159	security device	vFW	-	Normal	-	2023/04/21 22:50:10	Edit Delete
test		vfwDemo5k	10.90.8.130	security device	vFW	China/Jiangsu/Su...	Normal	-	2023/03/27 14:10:41	Edit Delete
NGFW		SG-6000(0010085865235804)	10.89.17.194	security device	vFW	-	Normal	-	2022/10/28 19:49:47	Edit Delete
BDS		VM08	192.168.1.125	security device	vFW	-	Normal	-	2022/10/21 10:52:15	Edit Delete
WAF		vFWDemo12	10.90.3.54	security device	vFW	-	Normal	-	2022/05/16 18:12:30	Edit Delete

Threat Monitoring, Analysis and Prevention

CloudView delivers comprehensive threat visibility by correlating global intelligence with granular event analysis to detect anomalies in real-time. It triggers a coordinated response across the security products in complex network environment to automate mitigation. This synchronization transforms isolated defenses into a unified, proactive shield against sophisticated, multi-vector attacks.



Event List

Event Information

CI/CD Integration

Built for modern agility, CloudView seamlessly integrates into CI/CD pipelines to automate security provisioning. It allows enterprises to embed threat prevention and compliance checks directly into the application lifecycle, transforming security from an operational bottleneck into an automated, scalable enabler for business growth.

Advanced Capabilities and Integrated Security Solutions

AI-powered Operations and Analytics

Hillstone AI platform seamlessly integrates AI computing resources, models, and security agents to deliver full-stack intelligence across SecOps, operation and maintenance (O&M), data governance, etc. Leveraging AI-powered analysis, CloudView provides clear, contextual interpretation of security events. This eliminates workloads and uncertain factors by explaining complex attack behaviors in details, allowing security teams to respond faster and more accurately for efficient O&M, while significantly lowering the technical barrier for effective incident management and decision-making.

Secure SD-WAN

Hillstone's SD-WAN solution provides robust, comprehensive enterprise security to mitigate SD-WAN risks. The solution offers not only the visibility to see into network traffic, but also the ability to understand traffic context, and the capability to take action, protecting traffic at the edge. In addition, it provides centralized management, zero-touch provisioning, and superior QoS with active link monitoring for fast, simplified deployment, operation and protection for SD-WAN networking with enterprise-grade security foundation.

Universal ZTNA

Built on Hillstone award-winning enterprise-grade firewall foundation, Hillstone ZTNA delivers comprehensive endpoint visibility, and identity-aware, least-privileged, context-aware adaptive access control across the distributed environments. Featuring centralized management and high-availability distributed gateways with up to 24 backups, it ensures a consistent security posture and seamless experience. Hillstone ZTNA effectively secures remote access while significantly reducing operational complexity for diverse, hybrid environment.

